

Existing South Kona Management Area Boundaries

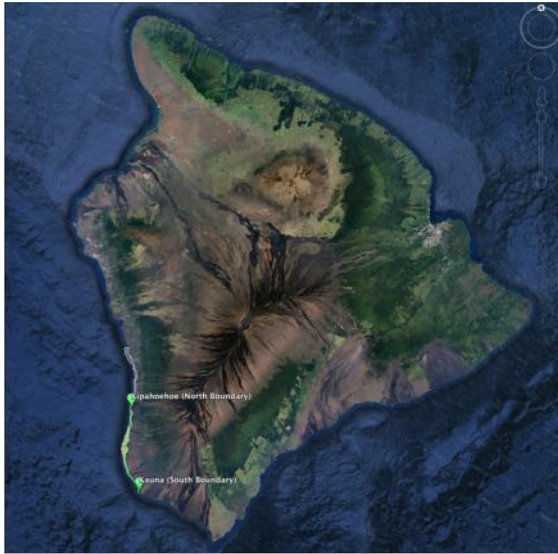


Fig.1 Map of Hawai'i Island (Above)

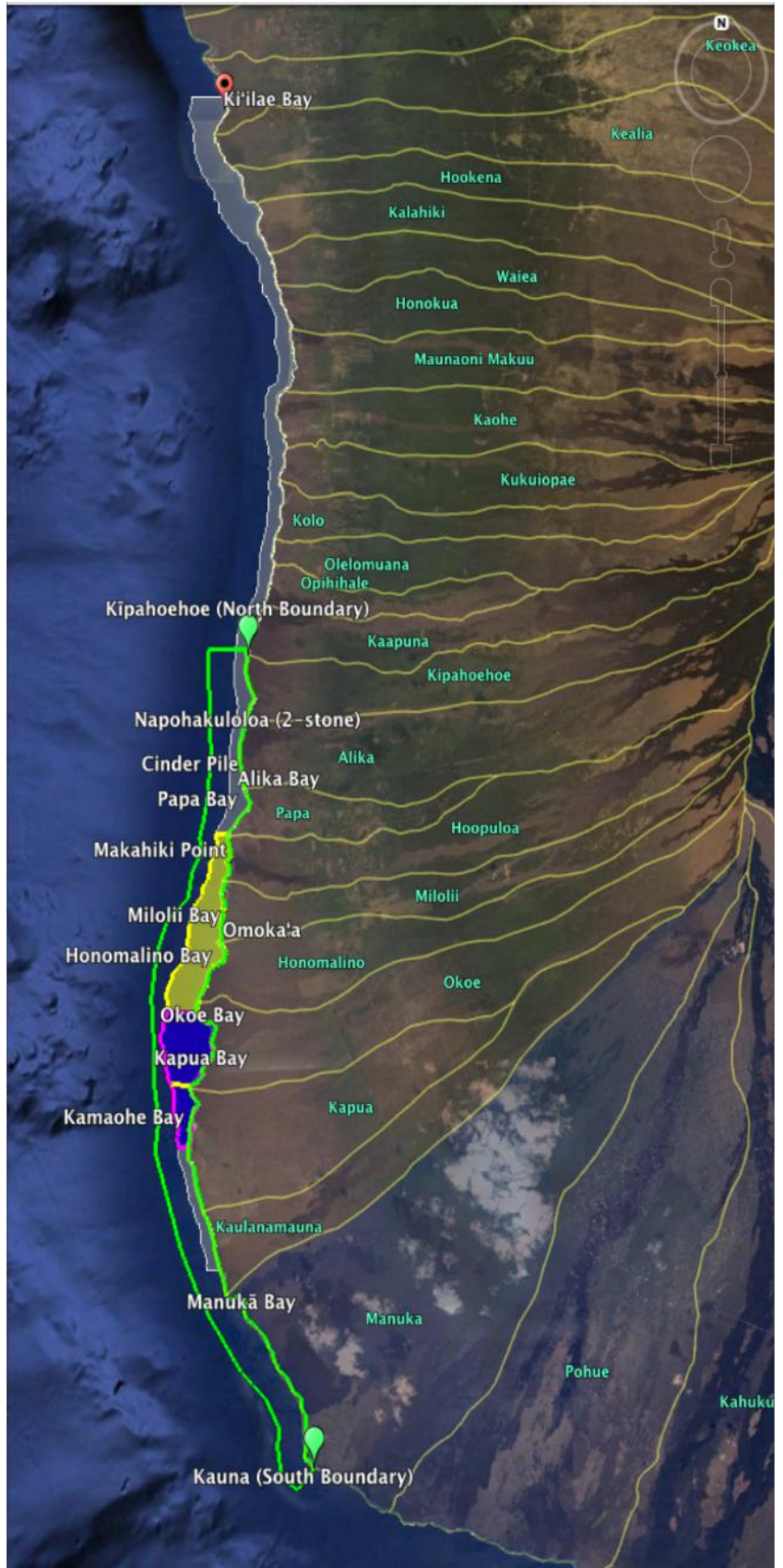


Fig.2 Map of existing South Kona Managed Areas and the proposed Miloli'i CBSFA boundaries. (Right)

- South Kona (Miloli'i) 'Ōpēlu Management Area. Kīlāue-Kēōkea boundary and Kapua-Kalaunamauna boundary. Restricted – no fish for or take 'ōpēlu with fish or animal bait, except with hook and line. 9.61 sq. miles

- West Hawai'i Regional Fisheries Management Area: Miloli'i. Fish Replenishment Area (FRA). 7.1 miles or 3.17 square miles.

- West Hawai'i Regional Fisheries Management Area: Hanamalo Point – Kanewa'a. Netting Restricted Area (NRA). 3.84 miles or 1.64 sq. miles

- Proposed Miloli'i CBSFA boundaries. Kīpahoehoe to Kauna. Approximate coastline distance is 18.6 miles or 12.6 sq. miles and to a depth of 100 fathoms

Proposed Area of the Miloli'i CBSFA

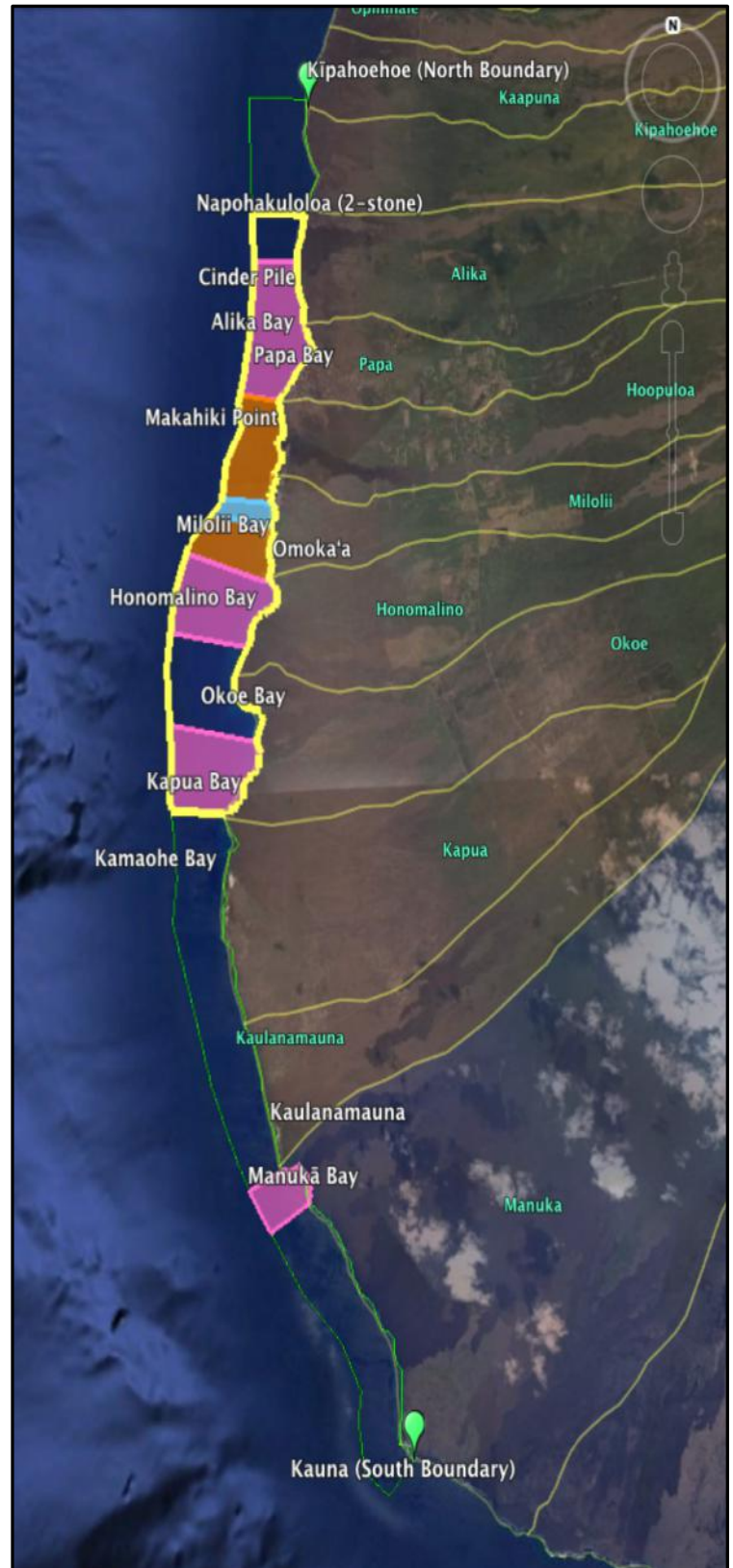
Why have these rules?

- 100% of our interviews with Miloli'i families said resources were better in the past
- 33 out of 65 people said they wanted to see some type of regulation or management
- 15 others want to see pono practice & fishing codes of conduct

Why these areas?

- We want to replenish these areas for future generations
- These are good grounds for our coral and fish resources
- Don't want to displace fishers or completely close off areas
- Pu'uhonua are distributed along coast to replenish areas
- Open fishing areas support fishers to harvest sustainably

-  **Total area:** 18.6 miles* or 12.6 sq miles
Kīpahoehoe – Kauna
Distance from shore: Depth of 100 fathoms
 -  **‘Ōpelu Traditional Management Zone**
Napohakuloloa (2Stone) – Kapua
8.11 miles* or 6.29 sq miles
 -  **Pu'uhonua Papa:**
Cinder Pile – Makahiki Pt.
1.95 miles* or 1.19 sq miles
 -  **Pāku'iku'i Rest Area**
Makahiki Pt. – Honomalino (North side of bay)
2.55 miles* or 1.57 sq miles
 -  **Puaai'a Miloli'i:**
Lighthouse – Laeloa
0.39 miles* or 0.19 sq miles
 -  **Pu'uhonua Honomalino:**
Honomalino (North side of bay) – Pukeokeo (near kiawe bush)
1.24 miles* or 1.1 sq miles
 -  **Pu'uhonua Kapua:**
South of Okoe Bay – Kaupō
1.2 miles* or 0.98 sq miles
 -  **Pu'uhonua Manukā:**
Manukā Bay North point – Manukā Bay South point
0.86 miles* or 0.37 sq miles
- * Approx. length in shoreline distance



Proposed Area of the Miloli'i CBSFA

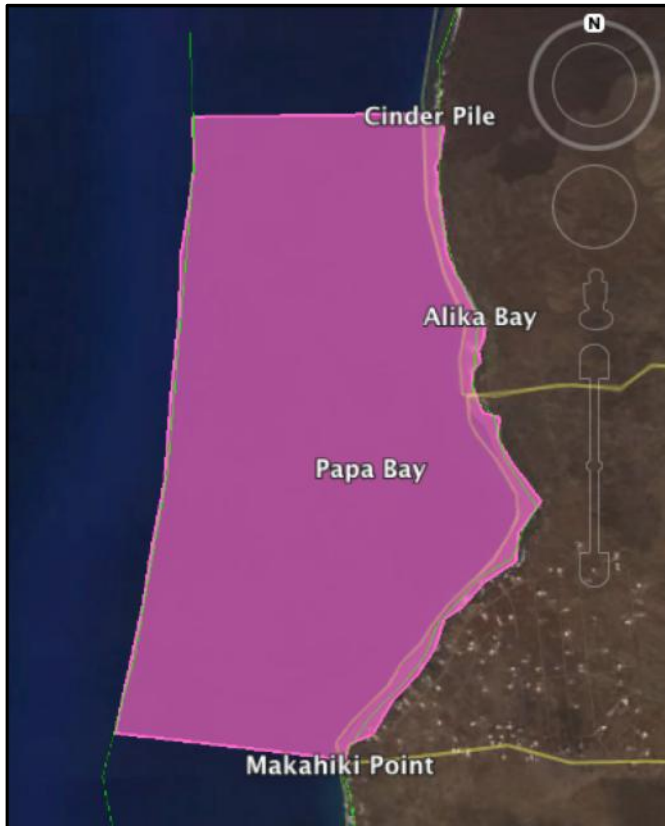
For All Pu'uhonua

Can:

- Use hook and line from shore or from a vessel
- Thrownet or scoop net from shore

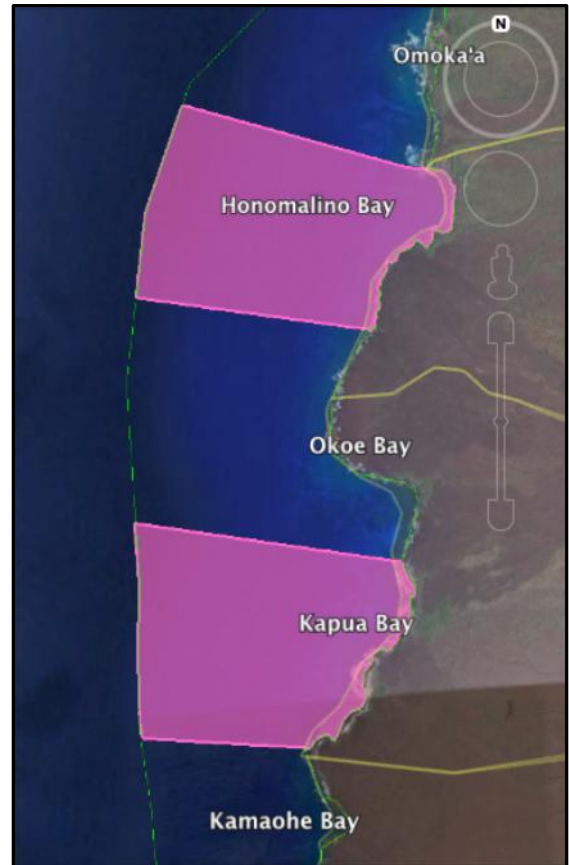
Cannot: (all other fishing gear) and

- Collect 'opihi (all three species)
- Dive using speargun or arbollet
- Use gill or cross net



Pu'uhonua Papa

- Cinder Pile Near Yee Hop Road (North)
- Makahiki Point (South)
- 1.95 miles* or 1.19 sq miles



Pu'uhonua Honomalino

- Honomalino Point on north side of bay (North)
- Pukeokeo (South)
- 1.24 miles* or 1.1 sq miles



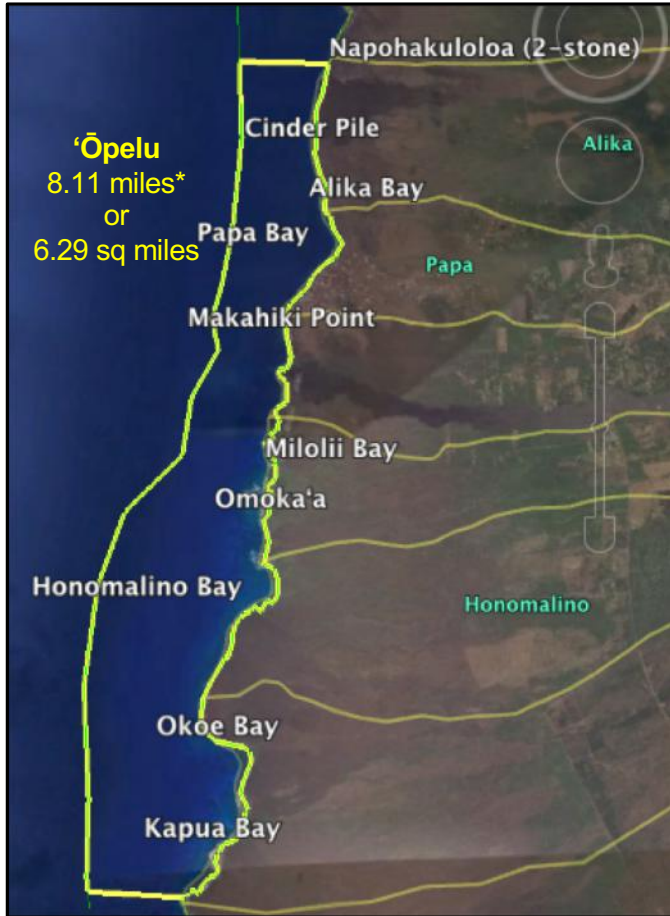
Pu'uhonua Manukā

- Manukā Bay Pt (North)
- Manukā Bay Pt (South)
- 0.86 miles* or 0.37 sq miles

Pu'uhonua Kapua

- South of Okoe Bay (North)
- Kaupō (South)
- 1.2 miles* or 0.98 sq miles

Proposed Area of the Miloli'i CBSFA



'Ōpelu Traditional Management Zone

- Napohakuloloa 2-stone (North)
- Kapua Point (South)

Rules:

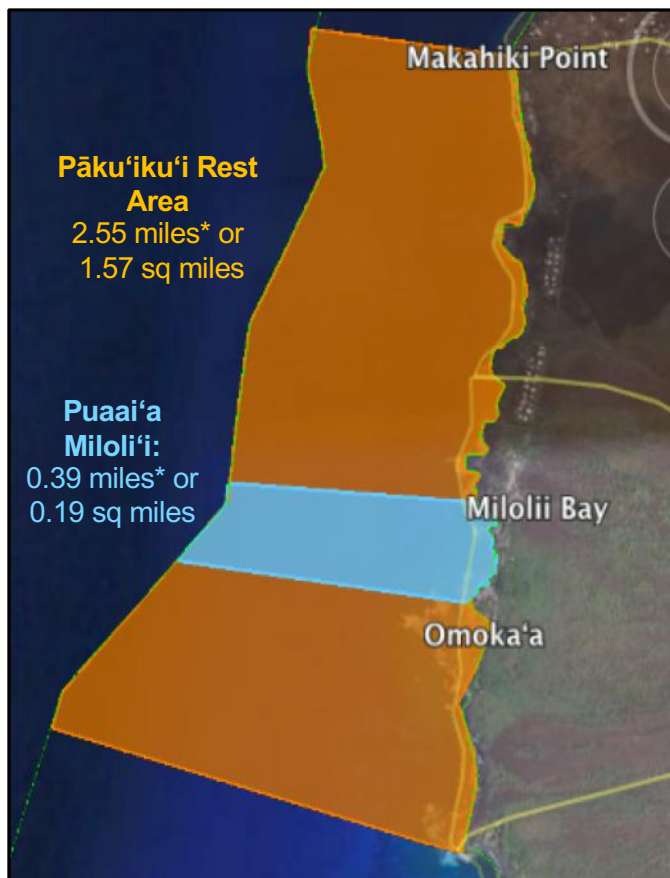
- Closed to fishing 'ōpelu during the traditional 'ōpelu kapu or closure time (Feb 1 – August 31 annually)

Pāku'iku'i Rest Area

- Makahiki Point (North)
- Honomalino Point (South)

Rules:

- No harvest of pāku'iku'i, achilles tang, *Acanthurus achilles*



Puaai'a Miloli'i

- Miloli'i Lighthouse (North)
- Laeloa Point (South)

Rules:

- 3-Prong okay, No arbollete/spearngun
- No spearing (with any gear) of:
 - Uhu
 - Pāku'iku'i
 - Weke 'Ula
 - Moanakali
 - 'Ū'ū (menpachi)
- Spearfishing of non-regulated species using 3-Prong only
- Hook & Line from shore or vessel okay
- Thrownet, scoopnet from shore okay
- Lay gill net okay (Daytime from shore only)
 - See existing state rules
 - No unattended nets for more than 30 minutes
 - Dimensions – no larger than 7ft high and 125 ft wide, eye size 2 ¾ inch